

the burnett buzz...

Summer 2016

Revised calculations suggest 24% less methane emissions from cattle

Since the outset of the Carbon Farming Project in July 2013, we have advised that 'carbon' policy and science were emerging and evolving disciplines. The following finding, regarding calculations used to estimate methane emissions from Australian livestock, is an example of how national carbon accounting procedures have been updated recently as a result of new research findings.

A recent report from the CSIRO has suggested that methane emissions from cattle in Australia are 24 per cent lower than previously estimated, equivalent to 12.6 million tonnes of carbon dioxide a year, following analysis of new Australian research data.

The finding was based on data collected over eight years of research into ways to reduce methane emissions in Australian livestock as part of Meat and Livestock Australia's (MLA) methane abatement research programs.

CSIRO's Ed Charmley said the work was conducted because of doubt surrounding the accuracy of previous calculation approaches used for cattle, particularly northern Australian cattle.

"Different methods used to calculate emissions from livestock in temperate and tropical regions were based on studies done in the 1960s and 1990s, mainly with dairy cattle," Dr Charmley said. Both of these past methods were found to be likely over-estimating the emissions from cattle.

"... CSIRO has suggested methane emissions from cattle in Australia are 24 per cent lower than previously estimated."

"The revised method, which is based on improved ways of estimating ruminant methane emissions from forage-fed beef and dairy cattle, be they in temperate or tropical regions, was tested and found to give consistent methane yields."

MLA General Manager, On Farm Innovation, Matthew McDonagh said the results of this Australian research provide an accurate dataset which clearly show our

cattle contribute substantially less to methane emissions than previously believed.

"This is positive news for the Australian livestock sector as it seeks to continually improve its production efficiencies and demonstrate its environmental credentials."

MLA Manager, Sustainable Feedbase, Tom Davison, said the latest research findings from the National Livestock Methane Program (NLMP) also showed there are a number of ways to reduce methane emissions from cattle while increasing productivity. Examples include integration of leucaena into grazing systems, increasing growth rates or improving herd reproductive performance. The NLMP is supported by funding from the Australian Government.

The analysis of Australian cattle research data was conducted by CSIRO, the Victorian Department of Economic Development, Jobs,

Transport & Resources, the New South Wales Department of Primary Industries, the University of New England and the Queensland Department of Agriculture and Fisheries, with technical input from the Australian Government Department of Environment.

Contact Veronica @
M: 0448 114 502
E: veronica@betterburnett.com



Inside this issue:

Action on the Ground—N ₂ O Trial Update	2
BCCA's success with Burrum system repair project tender	3
Second ERF auction conducted	3
Reef water quality grants program: the last leg	4
Pig compost put to work on multiple crops	5
Southern Queensland cropping bus tour	5
Understanding the importance of assessing your soil	6
Project to help save our Burnett beauties	6
Better Catchments in the North Burnett	7
Pasture Forums to be held in March	8
Last word...	8

Highlights

- Summary of our Better Catchments projects
- The last leg of the Reef Water Quality Grants project
- New Riparian Restoration Project announced
- Pasture Forums to be held in the Burnett
- Soil profiling equipment acquired by BCCA

Action on the Ground—N₂O Trial Update

The faba bean crop continued to grow well through winter and spring as part of BCCA's Action on the Ground Nitrous Oxide (N₂O) emissions project. In this time, the crop received two irrigations and regular Mancozeb sprays in a bid to reduce the fungus Chocolate Spot (*Botrytis fabae*), although we still had moderate outbreaks in each. The faba beans were mechanically harvested on both sites in late November 2015.

Yields were excellent considering there was significant lodging and staining from split pods and Chocolate Spot. In southern regions around 2 to 3t/ha is normal while our trial sites yielded 3.8t/ha and 4.3t/ha with a lot on the ground from splitting. Due to the staining the faba beans weren't export quality 1st grade, but still make useful stock feed when milled.



A sample from November's harvest showing discoloured seed.

Faba beans are showing a lot of promise in the Monto area as a good winter pulse rotation and with the new Chocolate Spot resistant variety released last year (1X220d/2-5), similar or better yields could be achieved.

On New Year's Eve both trial sites were planted to Sorghum for the next phase. New chambers have been installed that are 50cm x 50cm x 50cm, and being much larger, less pruning of plants is required in the chamber area as well as allowing for plant and fertiliser strips to be incorporated in each base.

With around 300mm of rain Jan/Feb the trial sites have been looking a little sloppy and gaining access has been hard but there should be some excellent nitrous oxide emissions readings from the gas samples that were able to be taken over that period. As soon as the soil dries out a bit more, soil samples from 1-10cm and 10-30cm depth will give us an idea of how the Nitrogen is being used in the soil as well. Sampling will continue to harvest which is predicted at around April/May 2016.

The project, which is being coordinated locally by BCCA aims to trial, measure and

"Yields were excellent considering there was significant lodging and staining..."

demonstrate farm technologies that reduce nitrous oxide emissions while maintaining and hopefully improving cropping productivity and soil health.

The project is an initiative of the Burnett Mary Regional Group and BCCA supported by funding from the Australian Government's Department of Agriculture through the Action on the Ground program.

The project is additionally supported by the Central Queensland University (CQU), the Department of Science, Information Technology, Innovation and the Arts (DSITIA), the Queensland Department of Agriculture, Forestry (QDAF), FarmSTUFF and Wide Bay Composts.



The new, larger gas chambers which will require less pruning of sorghum plants

Contact Jenny @
M: 0429 546 768
E: jenny@betterburnett.com

What's on 'round the Burnett...

8 Mar	Soil Profiling workshop, Twin Rivers, Mundubbera
13 Mar	Port of Bundaberg Shorebird Monitoring Program, Bundaberg
16-17 Mar	Darling Downs Cropping Bus Tour, leaving from Monto
16 Mar	Pasture Forum, Boobyjan
17 Mar	Pasture Forum, Monto
19 Mar	Local Government Elections
13 Apr	BCCA General Meeting, Mundubbera
20 Apr	Precision Ag Workshop, Biloela
21 Apr	Precision Ag workshop, Gayndah



BCCA's success with Burrum system repair project tender

BCCA has been awarded the tender from the Burnett Mary Regional Group to implement the final two and half years of an Australian Government funded project to repair and protect river and creek banks in the Burrum River catchment, south of Bundaberg. Previously managed by BMRG, this new BCCA project will be managed by Field Officer Peter Crawford, with assistance from Katie, Melinda and Veronica.

The Burrum Catchment had the second highest riparian vegetation loss percentage of all the catchments in the Great Barrier Reef, according to the second Reef Plan Report Card. This loss was compounded by the extensive flood damage throughout the catchment in 2013. The lower Burrum Catchment also has high acid sulphate soil risk.

The Burrum System Repair project seeks to curtail riparian vegetation loss and

consequent significant contribution of sediment and nutrient to the Great Barrier Reef through the protection and restoration of riparian areas in the Burrum Catchment.

"Burrum System Repair project seeks to curtail riparian vegetation loss..."

The project aims to partner with land managers to undertake the following actions to assist in the maintenance of riparian

vegetation and natural wetlands:

- wetland and riparian cattle exclusion through management fencing
- off-stream watering points (associated with fencing)
- wetland and riparian revegetation
- wetland and riparian critical pest management actions (serious pest weeds and feral pig control)
- riparian erosion and/or bank stabilisation soft engineering works

The Burrum catchment includes the Gregory and Isis Rivers, and their tributaries, and covers an area of approximately 260,000 hectares. About a third of this area is National park or State Forest, but the remaining area has a very diverse landuse, from grazing, to cane and intensive horticulture.

Landholders in the Burrum cathment interested in being involved in the project should contact Peter on 0427 024 921, or email peter@betterburnett.com.



The Isis River near Childers, part of the Burrum catchment

Contact Peter @
M: 0427 024 921
E: peter@betterburnett.com

Second ERF auction conducted

For readers following the Emissions Reduction Fund (ERF) auction process, the second ERF auction was conducted in November 2015 which followed the initial auction in April 2015. The third ERF auction will occur in April 2016.

As mentioned in previous articles, the ERF is a voluntary scheme that aims to provide incentives for a range of organisations and individuals to adopt new practices and technologies to reduce greenhouse gas emissions.

A number of activities are eligible under the scheme and participants can earn Australian carbon credit units (ACCUs). One ACCU is earned for each tonne of carbon dioxide equivalent (tCO₂-e) stored or avoided by a project. ACCUs can be sold to generate income, either to the Government through a carbon abatement contract, or in the secondary market.

Carbon abatement contracts with the Government are awarded through the ERF auction process.

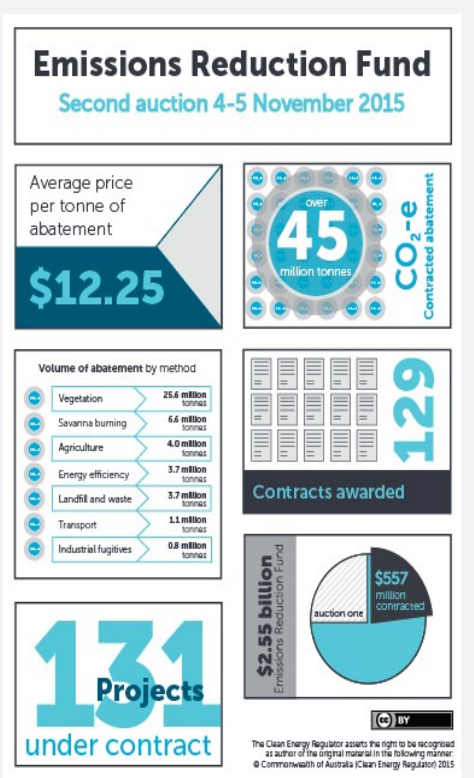
This second ERF auction achieved an average price per tonne of abatement of \$12.25 and 129 contracts awarded.

"...the ERF is a voluntary scheme that aims to provide incentives for a range of organisations and individuals to adopt new practices and technologies to reduce greenhouse gas emissions..."

Results from the two previous auctions together with information on eligible activities that can be implemented to earn ACCUs are available on the Clean Energy Regulator website under the Emissions reduction Fund tab at www.cleanenergyregulator.gov.au/ERF/About-the-Emissions-Reduction-Fund.

BCCA is part of The carbon Farming Project which is an initiative with Burnett Mary Regional Group and Bundaberg Fruit and Vegetable Growers and is supported by funding from the Australian Government.

Contact Veronica @
M: 0448 114 502
E: veronica@betterburnett.com



Source: Clean Energy Regulator website; accessed 17/2/16; www.cleanenergyregulator.gov.au/ERF/Auctions-results/November-2015

Reef water quality grants program: the last leg

The three-year BCCA Reef Water Quality Grants program is in its final stage.

With the program to end on 30 June this year, activities will be focussed on completing the final round of projects, conducting paddock assessments at the end of the wet season, and providing support and advice to coastal Burnett graziers.

The final year of the program has seen 41 landholders being successful in obtaining funding for fencing and water supply projects (both for riparian management and improved grazing management), and for projects to control erosion to reduce sediment flow to the creeks and rivers flowing to the Great Barrier Reef. Funding allocated in 2015-16 has been over \$283,000, with the landholders contribution seeing the projects valued at over \$750,000.

Of the 41 projects, 16 have been completed at this stage. The remainder of landholders are working flat out to meet the final year deadline of 31 March 2016.

During March and April, extension officer Peter Crawford (with assistance from Fiona

Morris) will be carrying out the final round of paddock assessments with participating landholders. The idea behind this activity is to give landholders a fairly accurate account of their feed supply that will need to last them for the next 12 months, so a sustainable stocking rate can be put in place to match supply with demand. This has been a very popular activity with all participating landholders so far, as they can see the value in forage budgeting using actual pasture quantity calculations rather than just having a guess at it.

Peter will also be running a final year grazing workshop during the autumn (at a date yet to be decided).

"...they can see the value in forage budgeting using actual pasture quantity calculations rather than just having a guess at it."

One such example of a 2015-16 project is that of Leigh Teasedale's of Rosedale Cattle Station. Rosedale Cattle Station had an



Fence erected to prevent cattle entering the gully and causing erosion

issue with stock entering a steep sided gully leading to Baffle Creek. Apart from the damage caused by the cattle to the loose and sandy gully sides, there was also a serious safety issue for both livestock and humans. Leigh obtained funding from BCCA to fence off the gully, with about 420 metres of fencing. The result is a protected sensitive area leading to less risk of erosion, and safer and happier cattle and people!

The Reef Water Quality Grants and Partnerships program is an initiative of the Burnett Mary Regional Group through funding from the Australian Government.

The Australian Government is continuing its commitment to work with graziers to help protect the Great Barrier Reef with the recent call for submissions for Phase 3 of the Reef Trust programme. This phase of Reef Trust has up to \$56M in funding available and will focus on improving grazing land management to reduce erosion losses to the Reef and will be delivered jointly with the Grazing BMP programme. Submissions were due in on 15 February with announcements made in March 2016.

Contact Peter @
M: 0427 024 921
E: peter@betterburnett.com



Steep sided gully leading to Baffle Creek

**BCCA are on Facebook—
Like our page!!**

Yes, BCCA is up with the times and on Facebook. Just head to: www.facebook.com/pages/Sustainable-Burnett-Catchment/197863326932611 or search for 'Sustainable Burnett Catchment News' on Facebook!



Pig compost put to work on multiple crops

Following an extensive maturation process of 26 weeks, the compost as part of our Pig Manure composting project was spread progressively over our 5 trial sites during November and December at a rate of 10t/ha. The sites are located on two properties and include Lucerne crops used for hay production, Rhodes Grass/Lucerne pasture and a sorghum crop.

The resulting compost went through the spreader well although there were still some larger clumps. These appear to be breaking down further with irrigation and the recent rain.

Soil samples were taken from all sites prior

to spreading to test for soil biology, nutrient levels and carbon levels as well as soil penetrometer readings to look for compaction layers and to monitor for any improvements in soil structure.

The compost itself was also tested and showed good levels of Phosphorus and Potassium.

Recent rain will certainly test the resilience of the crops, especially where the water has sat for a long period, however this adds to the range of conditions we are testing under and should give a more accurate picture as to how soil amendments can help in good and bad years.



The sorghum cropping looking very wet after recent rain

“The compost itself was also tested and showed good levels of Phosphorus and Potassium.”

manure management. More information to follow later.

The project is funded by the Australian Government’s National Landcare Programme under a 25 year Anniversary Landcare Grant.

Contact Jenny @
M: 0429 546 768
E: jenny@betterburnett.com



The compost being spread before sorghum planting

Water has sat for almost week on our sorghum plot.

The trial is expected to wind up in March or April this year with a workshop in mid April to discuss the results of the trial and presentations from Dr Kalvin Montagu (Applied Horticultural Research, Sydney) on soil health and composts in cropping as well as hopefully a representative from the pork industry on

Southern Queensland cropping bus tour

On the 16 and 17 March growers in the North Burnett will head off to tour farms in Kingaroy and on the Darling Downs. Following the Grains Best Management Practice workshop held in Monto in August last year, it was recognised by the group that a bus tour to see how other producers operate would be a great learning experience. As one of the participants stated during the workshop, “We don’t know what we don’t know”.

“...a chance to learn from other farming operations and take home ideas and inspiration.”

BCCA have worked with QDAF agronomist, Nick Christodoulou to develop an itinerary to visit the latest QDAF cropping trials in Kingaroy along with two farming properties, and then travel to Toowoomba to stay.

The following day will include visits to West Talgai feedlot and grain production near Allora, then on to Mayfield’s grain and cotton irrigation and dryland farm near



Dalby and lastly Jimbour Station’s cattle and forage farm and historical homestead.

The two days are a chance to learn from other farming operations and take home ideas and inspiration. Numbers are limited; however, if you are interested, bookings close on the 4 March.

This project is supported by BMRG and coordinated locally by BCCA, through funding from the Australian Government’s National Landcare Programme.

Contact Marisa @
M: 0439 032 253
E: marisa@betterburnett.com

Understanding the importance of assessing your soil

Understanding the characteristics of the different soil types which exist on your property helps ensure you manage your soils to avoid degradation and to make best use of them within your production system.

For example, knowing your soil characteristics can help you determine the most suitable areas for improved pasture, the best place to build sub-divisional fences when fencing to landtype for enhanced rotational grazing and which areas are most suited to the different crops you grow.

BMRG has contracted BCCA to complete a small project between now and June 2016, working with previously identified landholders to conduct soil coring and basic soil assessment. A major aim of the project is to identify any risk areas (eg. sodic soil which are soils high in sodium that will erode if exposed) and determine the management practices to avoid or manage the risk (eg. maintaining healthy pastures



BMRG's Sue Burt demonstrating the use of the soil profiling equipment

and good ground cover on this soil type).

The good news for BCCA and landholders within the Burnett is that as part of the

"... we will be purchasing soil coring equipment and a basic soil assessment kit..."

project, we will be purchasing soil coring equipment and a basic soil assessment kit. In March, BCCA staff will be trained in the use of this equipment which will complement the soils sampling training we completed this month. The equipment, coupled with our newly acquired skills will allow us to use these tools with landholders in subsequent projects to better understand and manage their soil.

This project is supported by BMRG through Queensland Government funding for Sustainable Grazing Management.



Contact Marisa @
M: 0439 032 253
E: marisa@betterburnett.com

Project to help save our Burnett beauties

We all know that the Burnett Catchment is special. However, it is not only our home, but also provides one of the only homes for some of Australia's most protected native species.

If you haven't already seen them frolicking and floating around in our waterways, we would like to introduce you to the Burnett's very special beauties – the Australian (QLD) Lungfish (*Neoceratodus forsteri*) and the White throated snapping turtle (*Elseya albagula*) or as we like to call her, 'Elsie'.

The Australian, or Queensland Lungfish is a stout (48kg max) long (1.5m max) bodied freshwater fish. These fish are one of the oldest known still existing vertebrate (backbone) species with fossils dated over 100million years old. They have gills and also a single lung which you can see them using when they broach the water surface. However unlike their African counterparts, they cannot survive without water. These species are found naturally ONLY in the Burnett and Mary Catchments.

'Elsie' the White throated snapping turtle is our very own bum breathing beauty! They are one of the largest short necked freshwater turtles in Australia at 38cm long and ONLY found in the Burnett, Fitzroy and Mary catchments. They eat water plants, fallen fruit, insects and molluscs. Nesting is on the banks from May—July and the eggs (6cm long) hatch in December – January.

Like us, the biggest threat to these species is the loss of their homes. Floods, bank erosion, weeds, predators and stock overgrazing have reduced the native vegetation on the banks of our water ways.

"...FREE ASSISTANCE to revegetate and restore their creek banks as habitat for our local endangered species."

These species rely on shady overhanging native plants which keep the waters clear, clean and cool and provide a safe place to hide from predators. Restoring the native plants which also provides their food and bank protection from erosion is vital to the future survival of these local species.

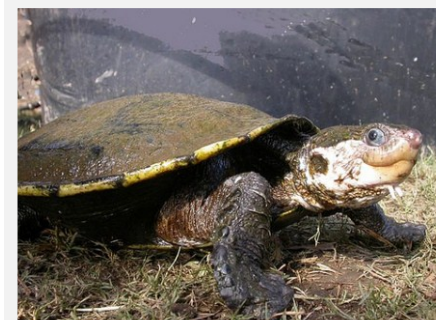
So how can we help our locals? Earlier this year, BCCA was successful in obtaining

funding through the 20 Million Trees Programme. The 20 Million Trees Programme is an Australia Government initiative as part of the National Landcare Programme which aims to have "20 million trees and associated understorey planted by 2020", with a focus on improving the extent, connection and condition of native vegetation with a priority focus on nationally threatened species.

BCCA's 20 Million Trees project is called 'Restoring Riparian Habitat in the Inland Burnett' and aims to help landholders revegetate major creek and river banks in the Inland Burnett area to increase the habitat for our local threatened species.

BCCA, working in partnership with the National Green Army program will be offering landholders on creeks and rivers in the Inland Burnett **FREE ASSISTANCE** to revegetate and restore their creek banks as habitat for our local endangered species. This assistance includes all the necessary labour & equipment, plants & planning. Our crews will do all the hard work purchasing equipment, plants, planting, controlling weeds & fencing to give your waterway a chance to restore native habitat into the future and maintain the site initially. We will then work with you to determine the best way to maintain the area into the future.

For further information or to be involved please contact Fiona Morris, fiona@betterburnett.com or phone 0407 482 242.



White Throated Snapping Turtle—
Photo by: M. Connell



Contact Fiona @
M: 0407 482 242
E: fiona@betterburnett.com

Better Catchments in the North Burnett

BCCA have been working with landholders on the Grazing and Cropping projects under the Better Catchments program for the Inland Burnett since mid-2015. These projects are an initiative of BMRG and coordinated locally by BCCA, through funding from the Australian Government's National Landcare Programme.

Under the Better Catchment's Cropping Project, ten landholders attended the Grains Best Management Practice (BMP) workshop led by Nick Christodoulou—Senior QDAF Agronomist. Growers had two intense days benchmarking their businesses against Industry best practices in August last year. There were many who found the process an eye opener and also a great opportunity to direct focus, as they all developed an action plan, identifying their priority management actions.

"The aim for landholders is to undertake practice changes to improve soil health and enhance sustainability..."

BCCA have been working with all these growers to implement some of their priority actions. In addition, BCCA have provided small grants to assist each of these growers implement projects to start them on their way to meeting BMP standards. Projects include, purchasing and utilising weather stations to ensure spraying regimes avoid environmental impacts through drift as well as ensuring optimal time is identified to undertake activities involved in hay production.



Graziers at the Grazing BMP workshop in Eidsvold in August 2015

Some other projects include modification to tractors and implements with GPS systems to allow for more accuracy in cropping practices, less waste with chemicals and seed and/or to move towards controlled traffic or zero till practices. The aim for landholders is to undertake practice changes to improve soil health and enhance sustainability which they are all on their way to achieving.

Under the Better Catchment's Grazing projects eight graziers attended the Grazing Best Management Practice (BMP) workshop—led by an expert team from QDAF, BMRG, private consultants and BCCA in August last year. Similar to the cropping group, these graziers had two intense days benchmarking their businesses against Industry best practices. They all developed their own individual action plans for all grazing modules to refer to and adjust as their business changes and/or develop.

As with the Cropping project, BCCA have been working with these graziers to implement some of their priority actions. In

addition, BCCA have provided small grants to assist each of these graziers implement projects to start them on their way to meeting BMP standards. Examples of projects include, improving pastures through



An example of a weather station purchased to ensure spraying regimes avoid environmental impacts through drift

establishing legumes on their properties and subdivisional fencing to more evenly distribute grazing pressure. Landholders are well on their way to completing their projects to undertake practice changes that will improve soil health and enhance sustainability.

BCCA will continue to work with these growers and graziers over the coming years and supply extension support and training opportunities.



Growers at the Grains BMP workshop in Monto in August 2015

 Contact Marisa @
M: 0439 032 253
E: marisa@betterburnett.com

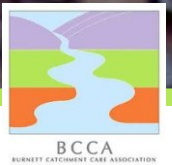


Burnett Catchment Care Association

BCCA is a member-based, not-for-profit organisation, employing professional staff to develop and implement natural resource management projects across the Burnett Catchment.

We work directly with landholders to support sustainable land management practices.

We partner with associated, like-minded organisations such as the Burnett Mary Regional Group and landcare groups where much of our funding is derived from State and Federal Government funding programs.



BCCA
BURNETT CATCHMENT CARE ASSOCIATION



General Manager:

Katie Muller M: 0428 753 338

Administration Manager/Secretary

Melinda Clarke P: (07) 4166 3898

Officers:

<i>Veronica Chapman</i>	M: 0448 114 502	<i>Marisa Young</i>	M: 0439 032 253
<i>Fiona Morris</i>	M: 0407 482 242	<i>Jenny Voigt</i>	M: 0429 546 768
<i>Peter Crawford</i>	M: 0427 024 921		

Office: 6 Lyell St Monto Q 4630 Post: PO Box 8 Monto Q 4630
P: (07) 4166 3898 F: (07) 4166 3897 E: admin@burnettcatchment.org
W: www.betterburnett.com

Pasture Forums to be held in March

If you are interested in practical ways to improve pasture & cattle nutrition for better productivity & reduced greenhouse gas emissions then the Pasture Forums at Boobyjan and Monto may be for you.

The forums will cover:

- Pasture improvement & growing legumes in pastures
- Improved animal nutrition for better herd performance

- Grazing practices for enhanced productivity & land condition
- How improved productivity & herd performance reduces greenhouse gas emissions

Speakers include Pasture expert Stuart Buck (QDAF Rockhampton); Senior Beef Extension Officers Roger Sneath (QDAF Toowoomba) and Damien O'Sullivan (QDAF Kingaroy) and BCCA's own Veronica Chapman.

The pasture forums will be held in **Boobyjan on Wednesday 16 March** in conjunction with South East Burnett Landcare and in **Monto on Thursday 17 March** with support from Hayley Webster from FarmSTUFF.

To RSVP for either event, please contact our office on (07) 4166 3898 or email admin@burnettcatchment.org.

 Contact Veronica @
M: 0448 114 502
E: veronica@betterburnett.com

Our successful acquisition of recent projects including our 20 Million Trees project "Restoring Riparian Habitat in the North Burnett" and BMRG's Burrum System Repair project have provided BCCA with the funding security we needed.

These projects, along with our other current projects such as Action on the Ground, Carbon Farming Project, Reef Water Quality Grants and Better Catchments means we are able to sustain our current staffing which stands at seven permanent officers for at least the next 12 to 18 months. This is

wonderful news as funding six months ago was looking very worrying.

This small security has not left us idle and we have continued to apply for additional funding through the Sustainable Agriculture Grants and have partnered with BMRG and a number of other industry groups on a submission under Reef Trust Phase 3 earlier this month.

Our secretary Melinda and I would like to encourage past members to renew their membership. BCCA is considering applying for gift recipient status and to be eligible we

need to have a significant number of paid members. Membership is still only one dollar and we now have the option of a 5 year membership for \$5.

Here's hoping the great rain we have had in the last month continues and we are set for our cooler months.

See you around this large and diverse catchment of ours!

Katie Muller

 Contact Katie @
M: 0428 753 338
E: katie@betterburnett.com

2015/16 MEMBERSHIP RENEWAL

Renew your membership for only \$1 and keep up to date with BCCA activities

- \$1 cash \$1 stamp **NEW** \$5 for 5 year membership

Name: _____

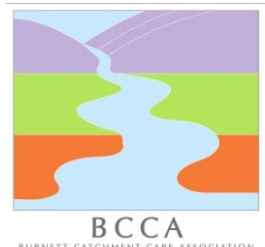
Postal Address: _____

Property Address: _____

Phone: _____ Fax: _____

Mobile: _____ Email: _____

Please return with \$payment to: BCCA PO Box 8, Monto Q 4630



BCCA
BURNETT CATCHMENT CARE ASSOCIATION