



APPLICANT GUIDELINES

SUSTAINABLE AGRICULTURE:

GRAZING GRANTS

**Project Applications Due
5pm,
2 November 2012**

**Post:
Burnett Mary Regional Group
PO Box 501
BUNDABERG 4670 QLD**

**Email:
sustainable.landscapes@bmrq.org.au**

**Or Applications can be
hand delivered to:**

**Wondai Office – 32 Bramston Street
Bundaberg Office – 193 Bourbong Street**

**For online applications go to
www.bmrq.org.au**

FOR FURTHER INFORMATION PLEASE CONTACT:

Sustainable Landscapes Project Officers

Kay Enkelmann

BMRG Wondai

P: 07 4169 0720

M: 0409 610 746

E: kay.enkelmann@bmrq.org.au

Saranne Giudice

BMRG Bundaberg

P: 07 4181 2999

M: 0439 328 334

E: saranne.giudice@bmrq.org.au



CARING
FOR
OUR
COUNTRY



Queensland Government

GUIDELINES

The Burnett Mary Regional Group (BMRG) is investing funding from the Queensland and Australian Government into sustainable agriculture. BMRG are partnering with landholders to deliver on-ground projects by providing funding incentives to adopt land management practices that improve soil health and enhance sustainability.

The '**Sustainable Agriculture Grazing Grants**' aim to improve groundcover and soil condition, enhance carbon content of soils, and reduce impacts of wind and water erosion.

Landholders seeking to improve current practices are eligible and encouraged to apply. Applications for grants are up to a maximum of **\$5,000** (GST exclusive) are available. Proposals must relate to on-ground activities that will lead to the long-term adoption of sustainable agricultural management practices.

PROJECT CRITERIA

- The property must be located within the Burnett Mary Region, in the far Western Burnett in the target sub-catchments of **Auburn, Nogo, Smalls Creek, St John Creek and Cadarga Creek** – refer to attached map.
- Applications must be matched equally with an in-kind contribution from the landholder. In-kind contributions may include cash costs, machinery use, labour or materials.
- Applicants must provide a property map indicating the property boundary and paddocks on which the project will occur. (The Sustainable Landscapes Project Officers are able to provide you with a map of your property.)

FUNDING ASSESSMENT

Applications will be evaluated by a technical assessment panel based on a competitive process. All projects will be evaluated against set criteria to identify proposals that provide the best outcomes and provide the most effective and efficient use of funding for improvement of agricultural practices in the Burnett Mary region.

Criteria for evaluation include:

- (1) Rating of anticipated improvement in soil management practice
- (2) Project size (ha)
- (3) Longevity (How long the effects of the project actions will last.)
- (4) Productivity benefits

PROJECT OBJECTIVE

The project objective is long term environmental sustainability of agricultural enterprises through the adoption of practices which lead to the improvement of soil condition. Key principles include:

- Manage grazing pressure to enhance pasture cover and improve soil condition.
- Rest paddocks to increase ground cover to reduce run-off, increase soil health and reduce erosion.
- Fencing riparian areas to reduce soil erosion and sediment loss.

EXAMPLES OF PROJECTS

- Fencing to land type to manage grazing pressure.
- Fencing to reduce paddock sizes and implementation of rotational and time controlled grazing.
- Fencing riparian areas (creeks and streams).
- Installation of off-stream watering points to reduce grazing pressure on riparian zones.
- Installation of additional watering points to spread grazing pressure across paddocks.

PROJECT CONDITIONS

Should your project be successful, you will be required to;

- Enter into a project agreement (or contract) with Burnett Mary Regional Group.
- Complete the project by 30 April 2013.
- Provide photos of the project.
- Provide a copy of receipts of items purchased.
- On conclusion of the project, BMRG staff will conduct a field inspection and acquittal.
- 100% payment made on satisfactory completion.
- Be willing to showcase your project as part of a case study or a site visit location for a field tour (in consultation by BMRG).

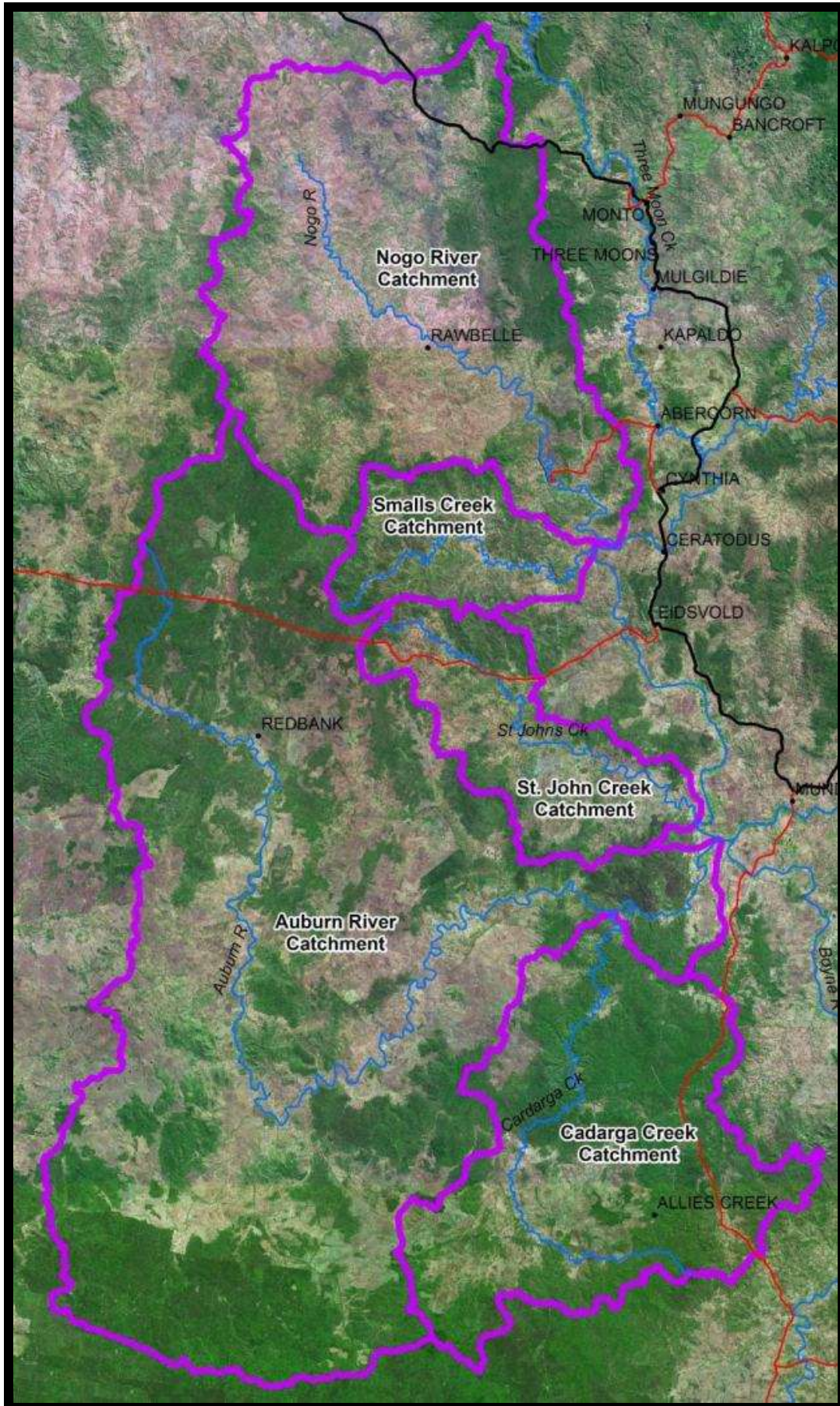
APPROXIMATE TIMEFRAMES

- Applications due 2 November 2012.
- Applications assessed mid November 2012.
- Successful applicants contacted approximately mid to late November and contracted.
- Latest completion date is 30 April 2013.

EXCLUSIONS

Better Catchments **will not fund** the following;

- Retrospective activities or works already underway.
- Boundary fencing.
- Maintenance or normal wear and tear.
- Replacement of existing infrastructure or equipment.
- Projects that do not meet the funding requirements.
- Activities that are entirely production oriented.
- Projects that are outside of the Burnett Mary region or the target area.



Auburn, Nogo, Smalls Creek, St John Creek and Cadarga Creek Sub-catchments.