

Burnett Catchment Care Assoc —Newsletter October

It has been a busy past few months for BCCA staff, with funding application submissions, the wrapping up of the *Better Burnett* pilot, not to mention an overseas holiday for Louise and myself getting married, yet the team has coped extremely well through it all. I have accepted the role as Better Burnett Coordinator for BCCA and am very excited with the prospects this new role will bring, however I will continue my close involvement with Better Beef activities.

In September, BCCA were the proud winners of the Burnett Mary Regional Group's **Outstanding Project Implementation Award** for the *Better Burnett* project. This was wonderful recognition for the hard work the committee members and the Better Burnett staff have put into the Catchment Recovery Pilot over the last 18 months.

Our success with the Better Burnett project I am sure has contributed to our successful attainment of a number of funding programs for implementation in the next eight months. BCCA will be a major player for the Burnett in the rollout of Supergraze, a program funded by the Australian Government's Caring for our Country: Landcare - Sustainable Practices program aimed at assisting Southern Queensland graziers to sustainably improve the productivity of their land. Supergraze is a joint initiative with Condamine Alliance, Burnett Mary Regional Group, South East Queensland Catchments, Burnett Catchment Care Association and Mary River Catchment Coordinating Committee.

BCCA will also play a role in the delivery of the grazing component of Reef Rescue, an Australian Government funded program aimed at improving the water quality of the Great Barrier Reef lagoon by changing land management to reduce nutrient, pesticide and sediment run-off from agricultural land.

Finally, BCCA will form an even stronger partnership with the Burnett Mary Regional Group (BMRG), with BCCA field officers to deliver for the Burnett, BMRG's Better Catchments program aimed at integrated catchment management.

All these programs are in their early stages with stricter details to be negotiated and even with the short timeframe of about eight months, we are confident we can successfully deliver results for the Burnett.

Katie Muller



Katie Muller (nee Sibson) accepting BCCA's Award from Robert Messenger MP Member for the Burnett

From Louise's Laptop

While the *Better Burnett pilot program* may have wrapped up, some of the Better Bush activity is still continuing. There's been continued work on the Creeping Lantana compost tea project in the North Burnett and on Cats Claw Creeper biocontrol agent releases, in the Central and North Burnett. Both were showcased at the Qld Landcare Conference in September to delegates who participated in the Sip & Sap Field Trip. Along with our Administration Manager Letetia Berthelsen who brought a little bit of colour and entertainment as she dressed as the bus fairy. This colourful bus fairy had all participants on the tour on their wings, with a time line to keep too. The fairy was very busy all day fluttering here and there and was very please at the last stop for the day which had pulled up at the Three Moon Winery to round off a great tour. Private native forestry has taken a focus as well, after a successful teleconference with Sean Ryan, Dave Taylor and Sam Slack all putting their best foot forward to make it happen. Workshops are up and away following that, supported by BCCA, the first 5 day workshop series due to start at Slacks Hardwood Sawmill near Gayndah on November 12. This will be the first of 5 days looking at forestry on private land and the best management practices ensure that it can be sustainable and profitable at the same time, and will be held one or two days a fortnight. Register today with the BCCA office on 4165 3551! Other than that, there is much anticipation for what future projects will shape up like to ensure the Burnett gets a fair dose of funding and support for biodiversity.



What's On

6—Nov Supergraze Launch
12—Nov PFSQ Workshop
Gayndah
19—Nov DPI&F Feedlot Free
Seminar Dalby

What's New on the Web:

Downloads Available
Annual Report available for download. **SuperGraze** Launch Invite. **DPI&F Seminar** Flyer Information
Regulations Risks Reef Rescue
Get Reef Rescue Updates



*Sip & Sap Tour September 2008
Participants enjoying informative
information regarding Private
Forestry*

From Dean's Desk

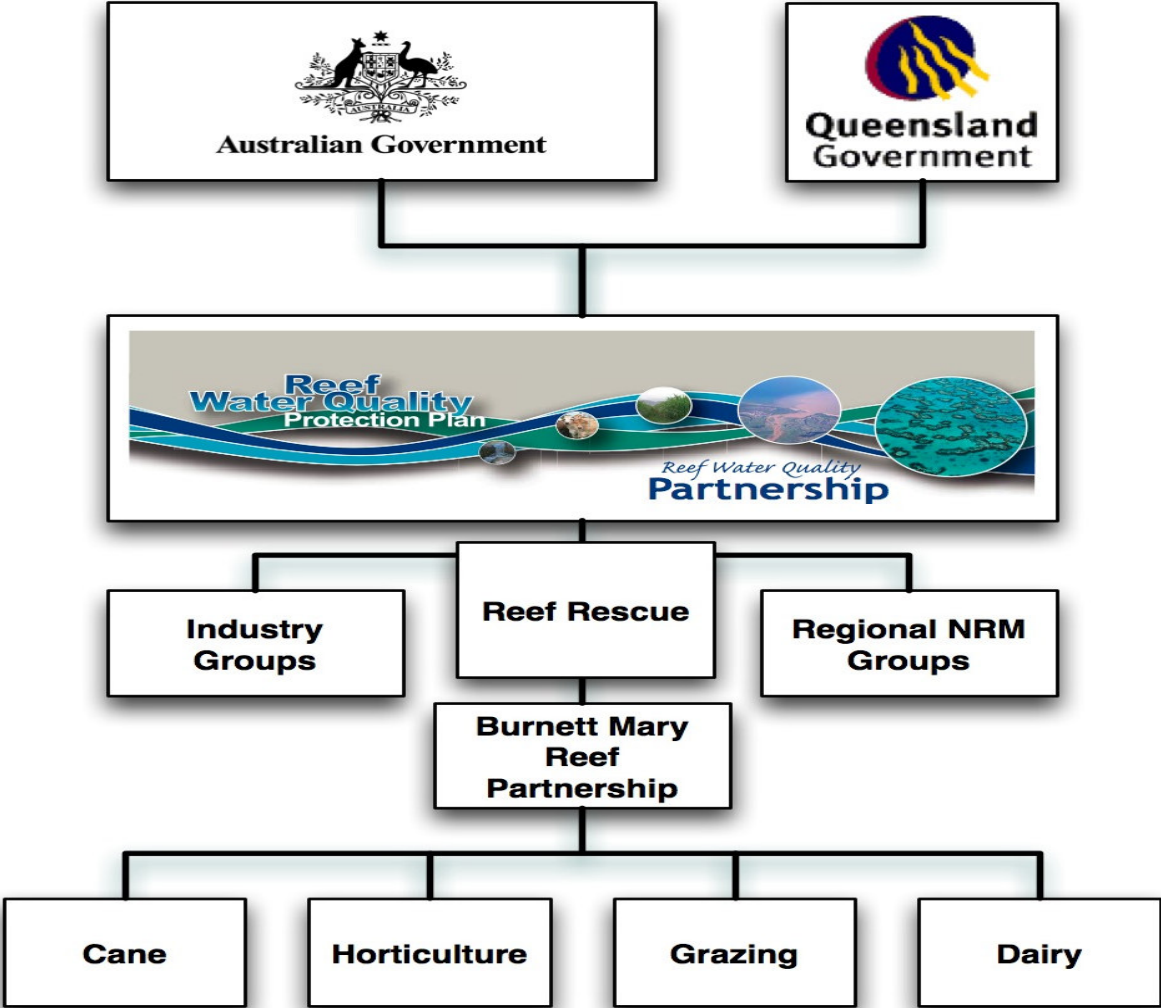
When Kevin Rudd came into office as Prime Minister, he had promises to keep. One of those promises was a \$200 Million commitment to improve water quality in the Great Barrier Reef Lagoon. The initiative which has become know as **Reef Rescue**, is a component of the Federal Government's **Caring for Our Country** program. **Reef Rescue** had its genesis from a proposal delivered by a consortium of industry groups and NRM groups. The consortium lobbied the then opposition and I'm sure the government of today to put some hard investment against the **Reef Water Quality Protection Plan**. The **Reef Water Quality Protection Plan** is an agreement between the Australian and Queensland governments to protect the Reef from land based sources of pollution. The plan is underpinned by a Memorandum of Understanding between the Australian and Queensland governments and was launched in 2003. A copy of the agreement can be found at <http://www.environment.gov.au/coasts/pollution/reef/mou/index.html>

If you would like to receive a copy of this newsletter please email admin@burnettcatchment.org
Or download a copy from our web sites
www.burnettcatchment.org
www.betterburnett.com



Reef Rescue Statewide

Reef Rescue works at multiple levels across the state which makes it multifaceted and at times confusing.



There are state level agreements between the Australian and Queensland Governments, Industry Groups (Agforce, Canegrowers, Cotton Australia, Growcom, Queensland Dairyfarmer’s Organisation, Queensland Farmer’s Federation) and Regional NRM Groups (BMRG in our region).

Burnett Mary Reef Partnership

At a local level **Reef Rescue** will be delivered by the Burnett Mary Reef Partnership which will be lead by the **BMRG** and involved local industry and catchment groups. **BCCA** has an in-principle agreement to provide extension of the Grazing component in the Burnett, Kolan, and Baffle. It is hoped that agreements will soon be formalised and work can soon begin. The geographic focus for the first year will be a coastal strip which can loosely be described as below Paradise and Monduran Dams.



Is Reef Water Quality really a problem?

At a recent Reef Summit the Premier announced that the Queensland Government would move to regulate on-farm activity to improve Reef Water Quality. **BCCA** made several statements on our website, ABC Radio, a letter to the Premier and Channel 7 News indicating a preference for voluntary measures over regulatory responses. Those statements include the assertion that technical support and financial incentives for landholders are working in the Burnett.

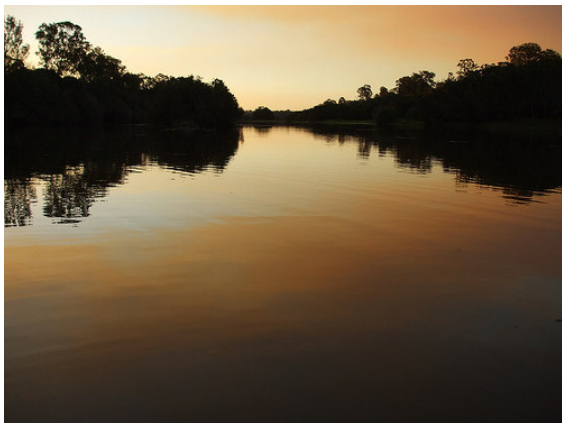
The real question is, are any of these measures voluntary or otherwise necessary? In October 10 leaders of scientific institutions released a Scientific Consensus Statement stating that

- water quality discharging into the Great Barrier Reef is poor,
- that land based contaminants such as sediment, nutrients, and pesticides are present,
- that there is stronger evidence that they are affecting the reef and marine environment,
- freshwater ecosystems are affected by agriculture, changes in hydrology, weeds, and degraded riverbanks

More details can be at http://www.reefplan.qld.gov.au/publications/consensus_statement.shtm

The short answer is Reef Water Quality is an issue and it is likely to be the case for some time. The **BCCA** will continue to assist primary producers in this region access technical support and investment. If that allows them to make improvements to their enterprises, that lead to better production and improve water quality, then the **BCCA** will be fulfilling it's mission.

Burnett River at Sunset—photo provided of Louise Newman



Letetia Berthelsen, Louise Newman & Katie Muller (nee Sibson) at the recent QLD Landcare Conference—Dinner hosted by North Burnett Landcare—Monto Sept

